



## SAVING LIVES. PROTECTING PROPERTY.

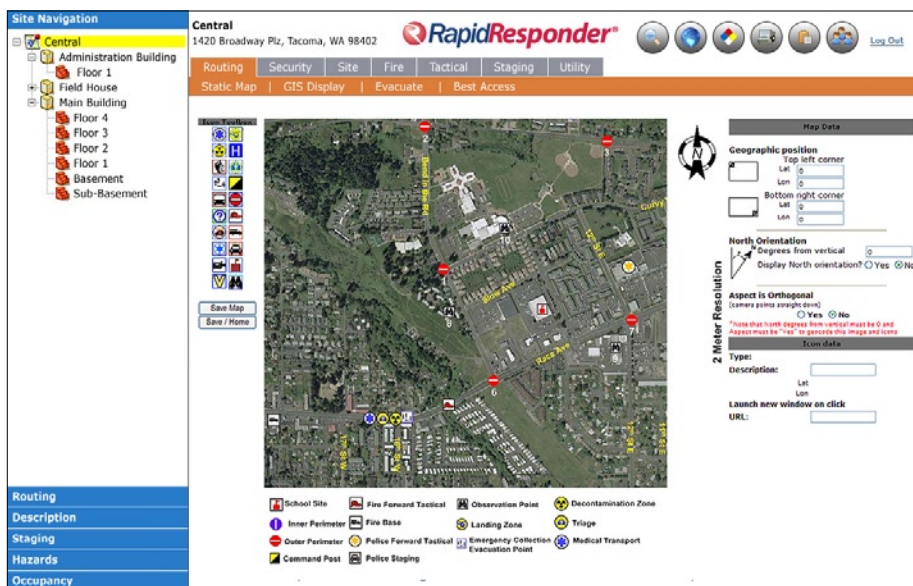
The award-winning Rapid Responder® Crisis Management system protects over 13,000 facilities across the country, including U.S. federal courts, postal facilities, public utilities, malls, hospitals, stadiums, hotels, and schools campuses.

### Plan. Coordinate. Respond.

Rapid Responder provides a complete solution: from collaborating with responders before disaster strikes, to quickly locating all emergency, disaster, and crisis plans in the midst of a crisis, to managing the aftermath.

Within seconds of a 9-1-1 call, Rapid Responder provides police, fire, and other responders access to:

- aerial and exterior photos;
- the best access routes;
- floor plans and utility shut-offs;
- incident-specific response plans;
- hazardous material inventories;
- containment, evacuation and family reunification locations.



Tactical Aerial View

### Proven Effective

During a recent student shooting at Lewis and Clark High School in Spokane, WA, Rapid Responder helped administrators and law enforcement work together to contain an armed student in just 12 minutes. Within 20 minutes, more than 2,000 students were safely evacuated to an offsite family relocation center.

#### Rapid Responder Implementation

(As of April 2009)

Public safety agencies using Rapid Responder	625
Number of schools protected	2,964
Number of facilities protected	14,826

### Why Choose Rapid Responder?

- The largest install base in the country
- The only statewide crisis system
- The only DHS SAFETY Act Certified solution.
- Proven in actual emergency events
- Designed by and for emergency responders
- Secure and portable
- Easy to use and sustain
- Endorsed by the National Sheriffs' Association
- Winner of the 2007 Harvard/Noblis Homeland Security Award
- Winner of the 2006 National Homeland Defense Foundation Innovation Award.



Prepared Response®

One Union Square  
600 University Street, Suite 1525  
Seattle, WA 98101  
206.223.5544 / 800.705.1856  
www.preparedresponse.com

Product Features	
<b>BUILDS TRUST</b>	» Pre-planning sessions help to facilitate communications and build relationships between key school security stakeholders, first responders and the community.
<b>PROVIDES CRITICAL INFORMATION</b>	» Instant access to over 300 site-specific data points, including tactical plans, floor plans, geospatial and site imagery, staging areas, hazardous materials locations and quantities, utility shutoffs, road blocks and evacuation routes, etc.
<b>SPEEDS MITIGATION AND SPEEDS RECOVER TIME</b>	» Pre-plans can be viewed en route via mobile data terminals in police cars and fire trucks, networked computers in dispatch centers, or portable USB storage devices. » Quicker access to information improves response times, which in turn helps to reduce property damage and speed recovery time.
<b>EASY TO USE</b>	» Simple, visual interface is quick-to-learn and easy-to-use.
<b>SINGLE SOURCE OF INFORMATION</b>	» Replaces three-ring binders, which are often out-of-date and difficult to use in an emergency, with a single, secure database that presents disparate data in a standardized format.
<b>REAL TIME UPDATES</b>	» Data changes can be done via an easy-to-use Web interface.
<b>SAFETY ACT CERTIFICATION</b>	» Rapid Responder is certified by DHS as an “Approved Product for Homeland Security” and as Qualified Anti-Terrorism Technology.
<b>GIS FUNCTIONALITY</b>	» Allows police, fire, and other first responders to view a variety of features, such as streets, pipelines, railroads, or political subdivisions as layers on an interactive map.
<b>CAN BE USED AS A REGIONAL SYSTEM</b>	» Can store data on thousands of facilities and is compliant with the National Incident Management System (NIMS) and Incident Command System (ICS) plans and protocols used by the majority of first responders. Rapid Responder is also deployed as the nation’s only enterprise state-wide critical infrastructure information system.
<b>FACILITATES SHARING WITH OTHER AGENCIES</b>	» In multi-state disasters, Rapid Responder access can be granted to military, government, and other responding agencies enroute for tactical planning before arrival.
<b>TRACKS AND LOGS INCIDENTS, DRILLS AND TRAINING</b>	» Document your drills, training and actual incidents. Append documents to the events to describe characteristics such as attendance, scenario, training objectives, etc. Create training and certification records for each employee.
<b>REAL-TIME ALERTS</b>	» Supports Common Alerting Protocol v 1.1 (CAP), allowing access to significant real-time alerts posted by the U.S. Weather Service, such as flash flooding, tornados, tsunamis, earthquakes, etc.
<b>PROVEN IN BATTLE</b>	» Used to mitigate a campus shooting resulting in a quick response by SWAT teams and containment of the gunman in under 12 minutes; as well as in other less dramatic, but relevant events.
<b>AFFORDABLE</b>	» Rapid Responder was designed from the ground up to be affordable for local first responder agencies, small units of governments, hospitals and school districts.
<b>EXPERIENCE</b>	» The Rapid Responder system and professional services have more uptime and nationwide experience in critical infrastructure analysis and cataloging than any other similar solution.

## System Features/Requirements

### BROWSER COMPATIBILITY

- Internet Explorer 6.0 or above is the optimal browser for this application
- Netscape Navigator 8.0 or above will allow for the most functionality
- Macintosh Users – optimal systems, but with limited functionality: OS 10x with Virtual PC running XP

### HARDWARE REQUIREMENTS

- Portable or Laptop Computer
- Pentium IV processor or better
- 1 GB RAM
- 8 GB Hard Drive

### OPERATING SYSTEMS

- Microsoft Windows XP
- Microsoft Windows VISTA
- Microsoft Windows 2000

### SERVER/STORAGE

Rapid Responder is accessed and administered with a browser that is secured with a 128-bit SSL encryption. The stand-alone application delivers content to remote end users utilizing XML encryption. In the stand-alone implementation, content resides locally on the computer’s hard drive and can be password protected depending on the organizations’ security policies.

The system architecture includes a number of hardware and software security processes and appliances.

### HOSTING FACILITY SECURITY FEATURES

- Locking cabinets, custom cages and suites
- AC or DC power available
- Fault-tolerant redundant power
- Fully redundant environmental systems
- Controlled temperature and humidity
- Fire-threat detection and suppression
- 24 x 7/365 monitoring/disaster prevention
- 24 x 7/365 technical support/assistance
- 24 x 7/365 secured access to facilities



One Union Square  
600 University Street, Suite 1525  
Seattle, WA 98101  
206.223.5544 / 800.705.1856  
www.preparedresponse.com